

Ghana's Data for Sustainable Development Roadmap Forum

Frank Amoyaw

Strategic Information Advisor, CDC/PEPFAR

Parallel Session A: Strengthening Administrative Data

Alisa Hotel | April 6th 2017



Background & Context

Ghana HIV Epidemiologic data & PEPFAR vision

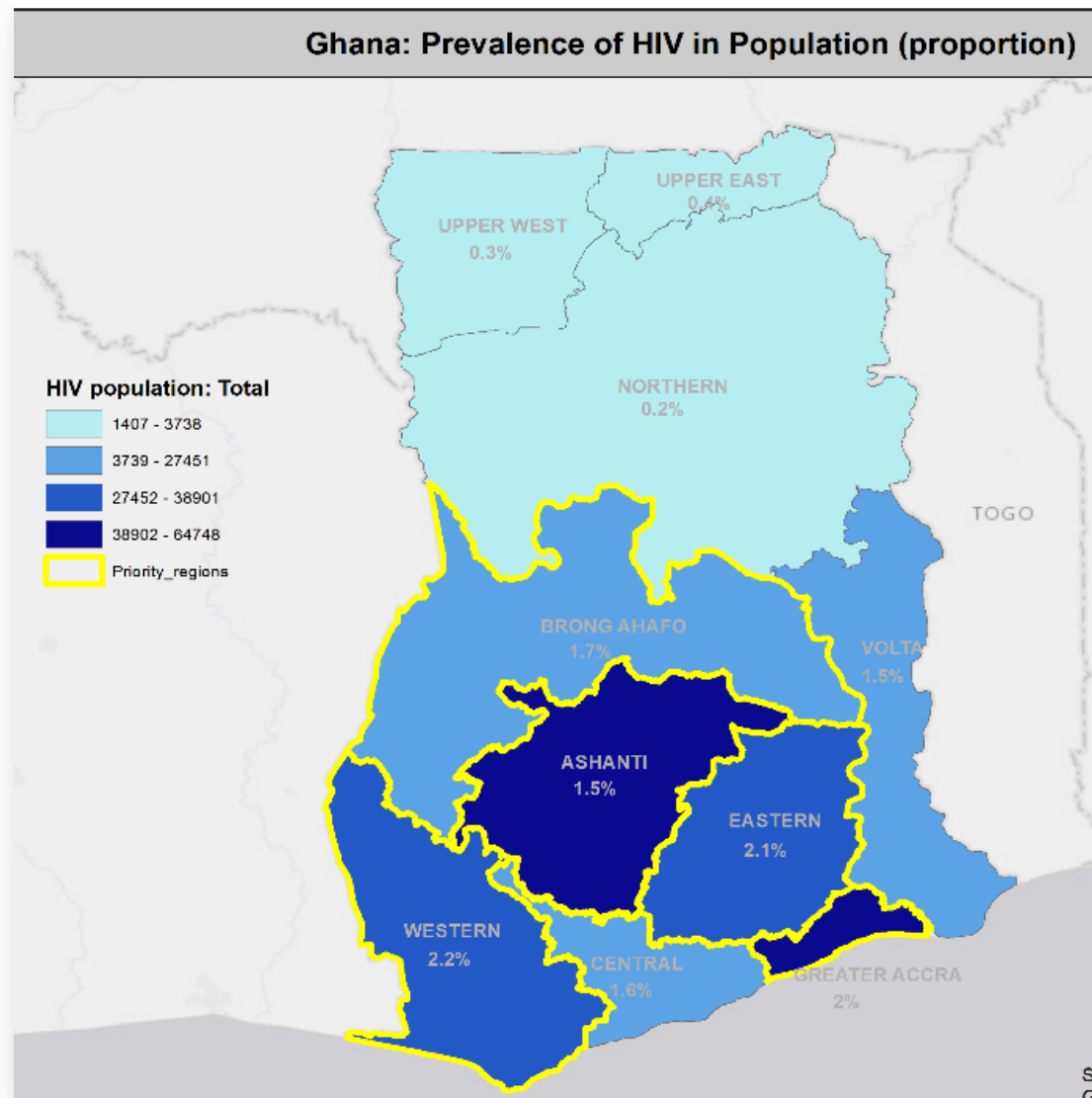
A New Era of Accountability, Transparency, and Solidarity to Accelerate IMPACT

Ghana HIV Epidemiology

- Estimated PHIV¹: 274,562
 - 18,577 children
- Overall HIV prevalence¹: 1.6%
- Key population HIV prevalence:
 - Men who have sex with men²: 17.5%
 - Female sex workers³: 7%

- Estimated new infections¹: 12,803
- Annual AIDS deaths¹: 12,646
- ART coverage (15+ years)¹: 37%
- Estimated pre-ART patients⁴: 50,000

1. GAC Status Report, 2015
2. IBBS Report, 2011
3. IBBS Report, 2015
4. NACP



Moved Forward, Going Further

PEPFAR's VISION: SUPPORT GOG TO ACHIEVE EPIDEMIC CONTROL BY 2020 ALONGSIDE KEY STAKEHOLDERS

COP 16

FOCUSED ON

- ✦ Achieving the 1st & 2nd 90
- ✦ Supported key systems strengthening activities needed to support 3rd 90

ADDRESSED CRITICAL GAPS

- ✦ **ARV Shortage** by securing approval for **one-time supplemental** funding for **\$23.7M** in ARVs and essential commodities
- ✦ **Signed MoU** between USG & GoG – mutual commitment to HIV care and treatment

COP 17 & 18

CONTINUE TO WORK ACROSS TREATMENT CASCADE

- ✦ To address gaps
- ✦ **Support model sites** and strengthen existing programs to **maximize impacts, efficiency** and inform national level programming

#SO 1: SUPPORT OF ART COVERAGE & HIGH QUALITY SERVICE DELIVERY

- Support for site-level TA at 10 model health facilities; export best practices to other ART sites nationally
- Strategic Information
- Laboratory & VL suppression
- Gender integration
- Supply chain management

#SO 2: DEVELOP AND SCALE-UP OF SUCCESSFUL MODELS FOR KEY AND PRIORITY POPULATION SERVICE DELIVERY

- Case managers
- Social network testing
- Peer navigators
- Drop-in centers

CROSS-CUTTING ACTIVITIES

Reduction of Stigma and Discrimination, Gender Integration, and Supply Chain Management



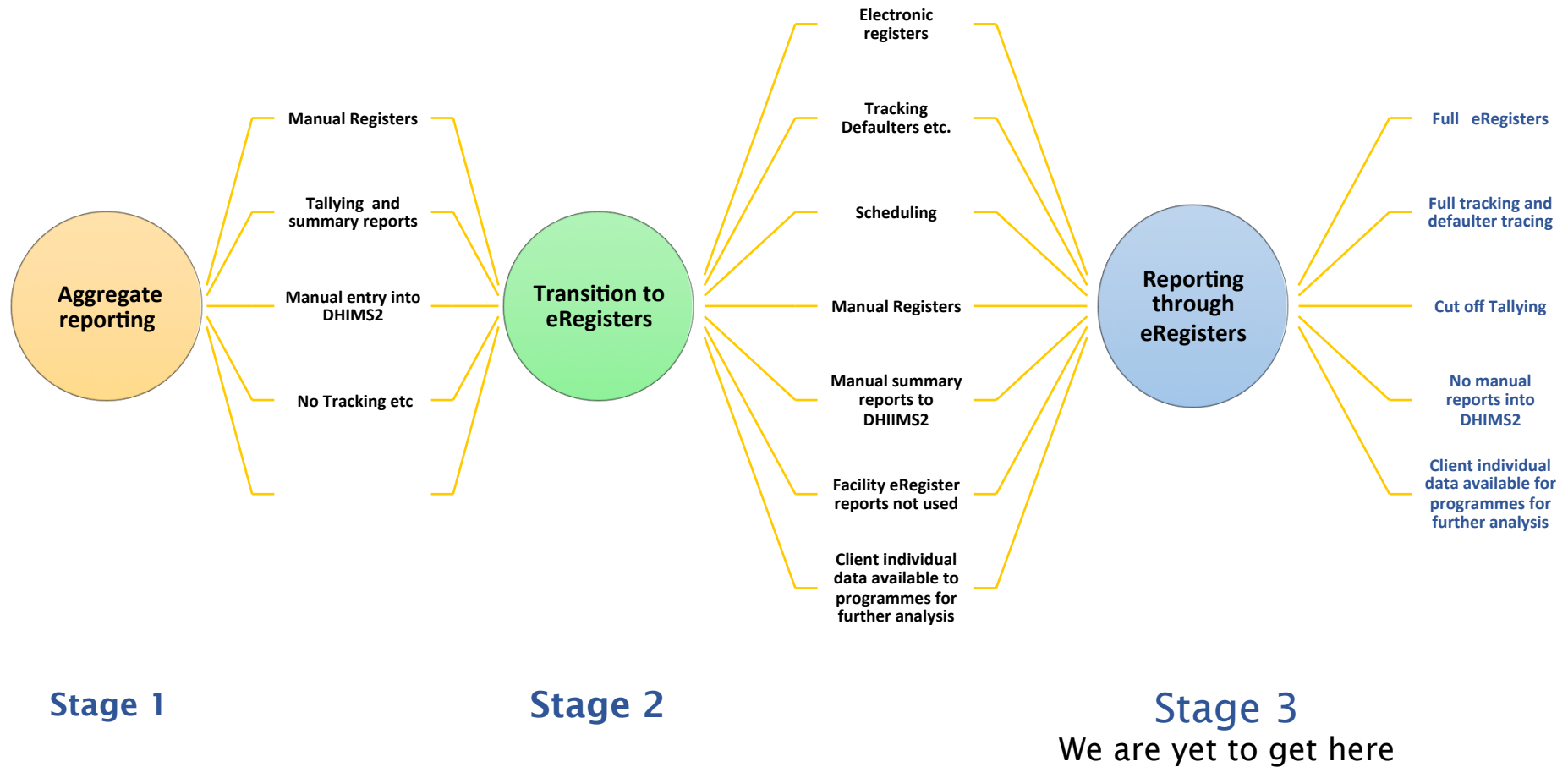
Data Innovation

Collecting Data to Monitor Key Populations and Ensure Treatment Success

A New Era of Accountability, Transparency, and Solidarity to Accelerate IMPACT

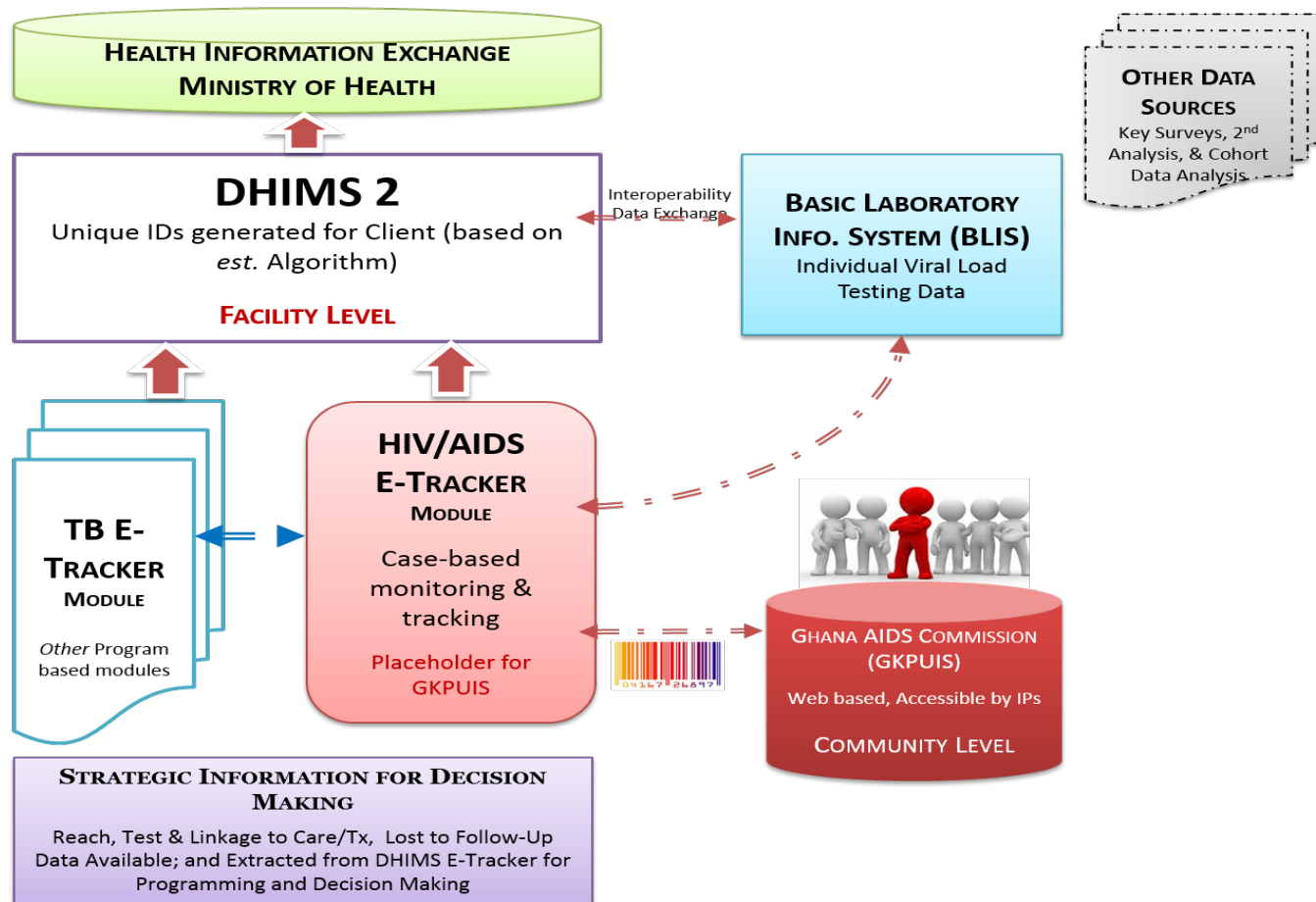
HIS Evolution & Challenges

Introducing eRegisters in OUR part of the world



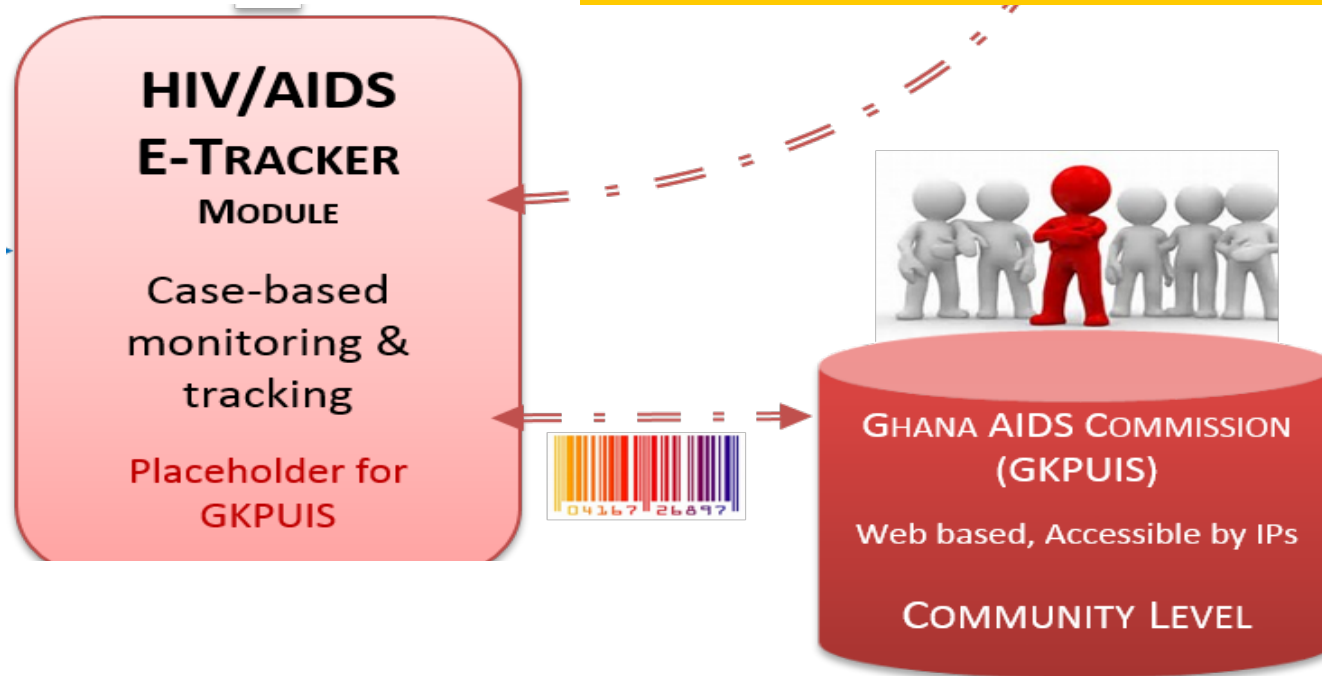
Source: Adapted from PPMED DHIMS Presentation, 2016

Data & Information Management Architecture (1/2)

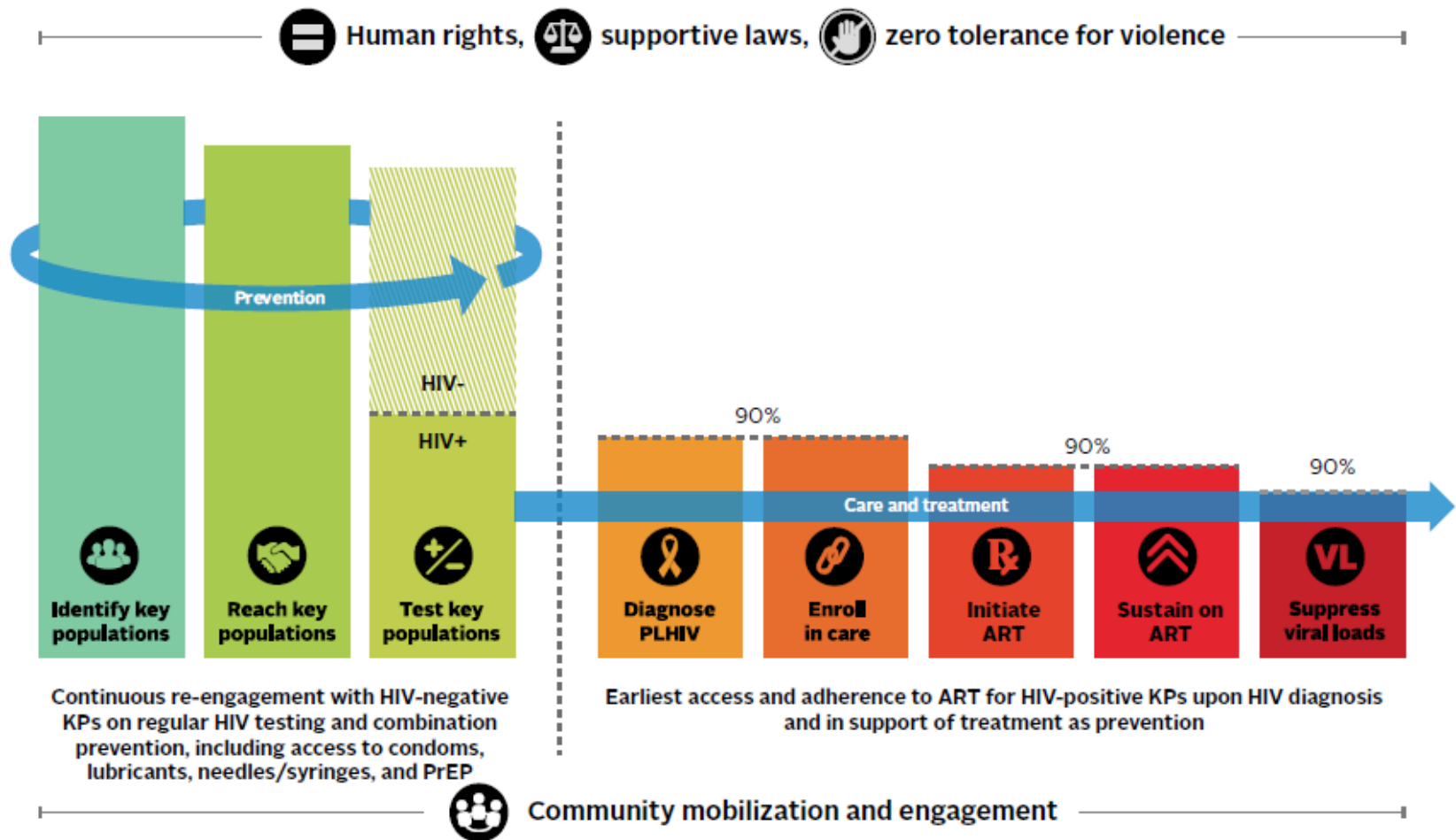


Data & Information Management Architecture (2/2)

GKPUIS allows community-level data on KP to feed into national data systems



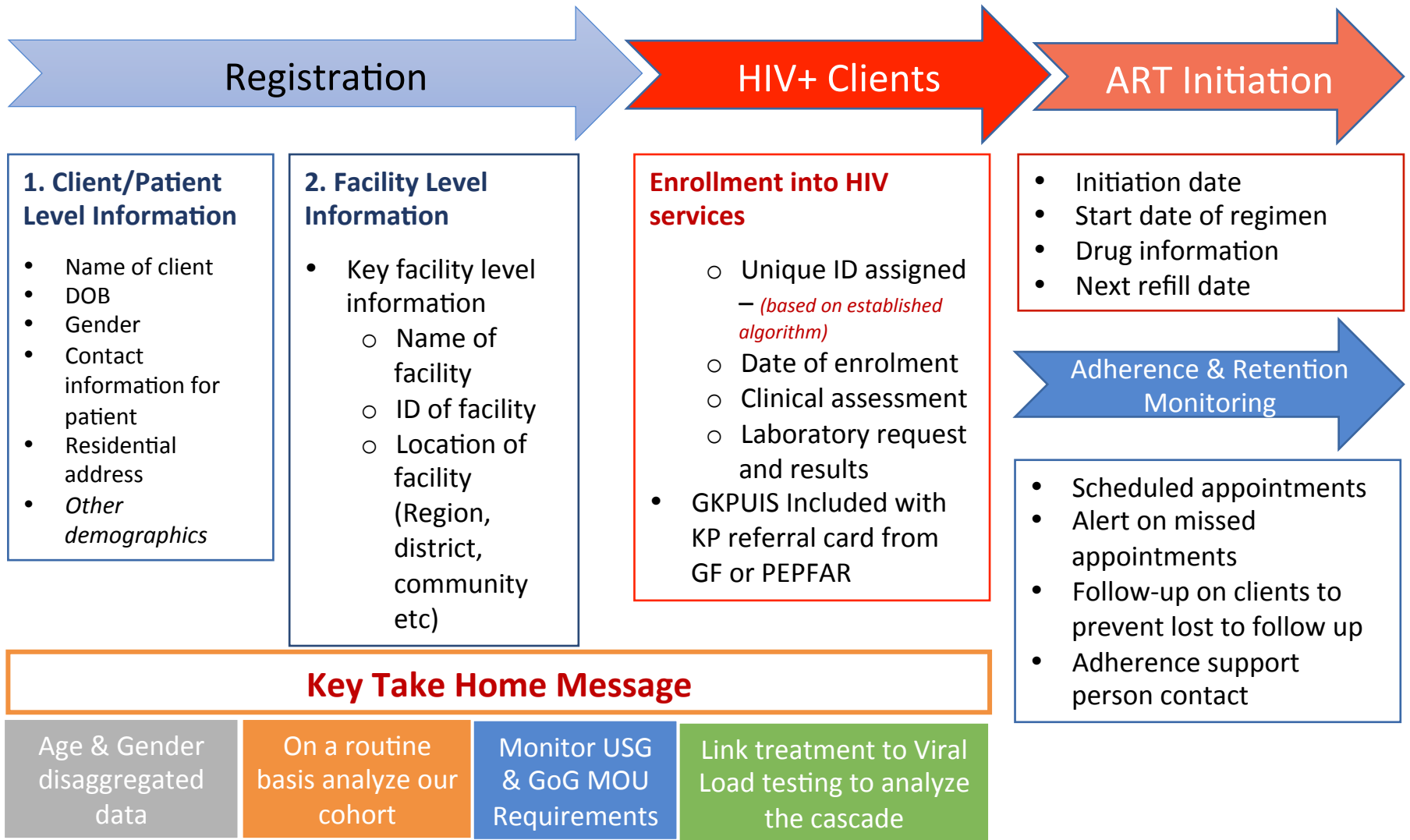
The HIV Continuum of Prevention, Care & Treatment Cascade



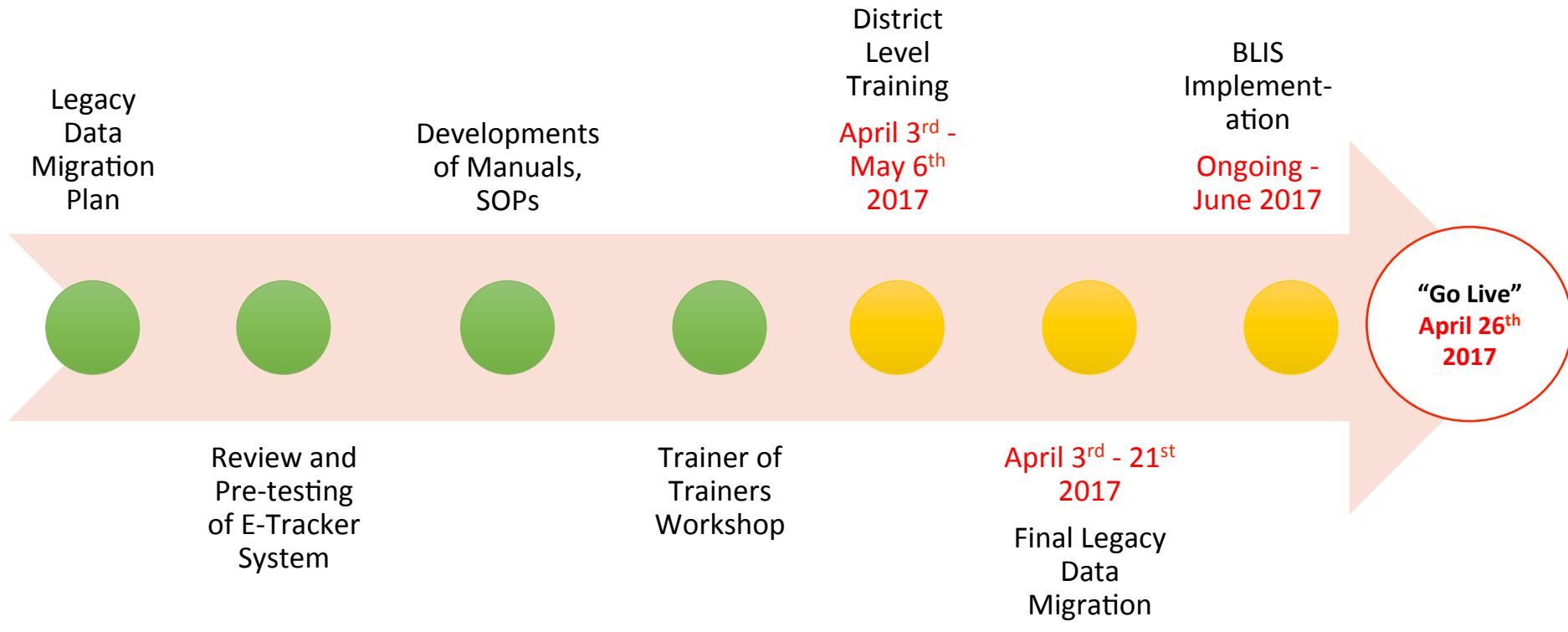
Source: Adapted from HIV Cascade Framework for Key Populations, October 2015

A New Era of Accountability, Transparency, and Solidarity to Accelerate IMPACT

Supporting data use: eTracker



E-Tracker Deployment Timelines



Ghana Key Population Unique Identifier System (GKPUIS)
Integration - *Ongoing*

Green: Completed | **Yellow:** Ongoing



ACKNOWLEDGEMENTS:

GHS/NACP Program Manager & Team
GHS/PPMED/CHIM Team
Ghana AIDS Commission
Global Fund & Development Partners
PEPFAR Ghana Team
PEPFAR S/GAC
Front Office, US Embassy, Ghana

THANK YOU!